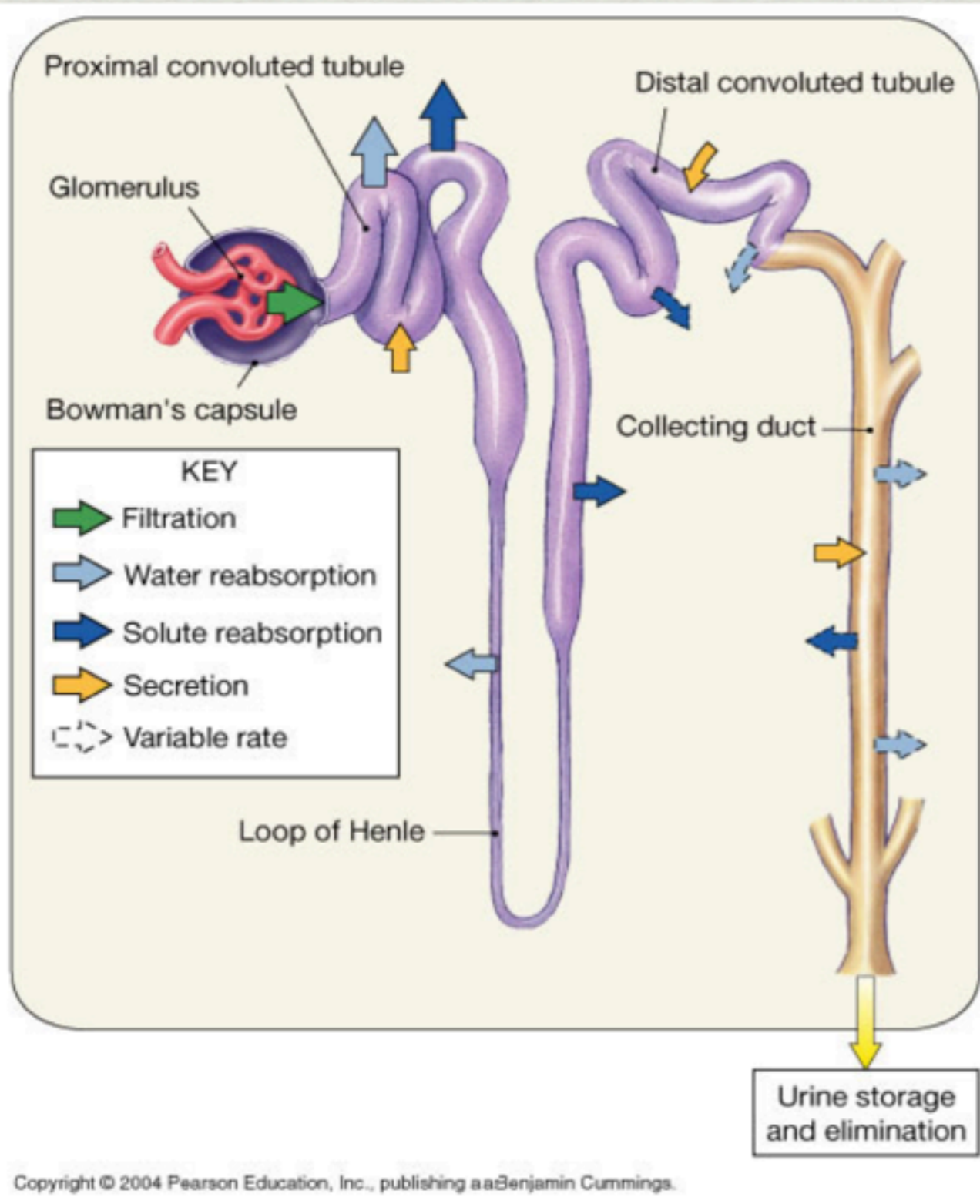


Water renal regulation



- * **All water reabsorption in the kidney is passive.**
- * **Water moves in response to osmotic gradients** that are directly/indirectly due to the reabsorption of solute, particularly Na. There are no water pumps in the body.
- * **GFR (180 l/day)**
- * **65% reabsorbed in the PT**
- * **15% reabsorbed in loop of Henle (thin descending limb)**
- * **20% of filtrate enters DT from which:**
- * **8% reabsorbed in CD (with no ADH)**
- * **>19% reabsorbed in CD (with maximal ADH)**
- * **left in urine 12% (-ADH) or 1% (maximal ADH) meaning 22L/day at 30-60 mOsm/L or 500 mL at 1200 mOsm/day**

anaesthesiamcq.com: Summary of Renal Water Handling