

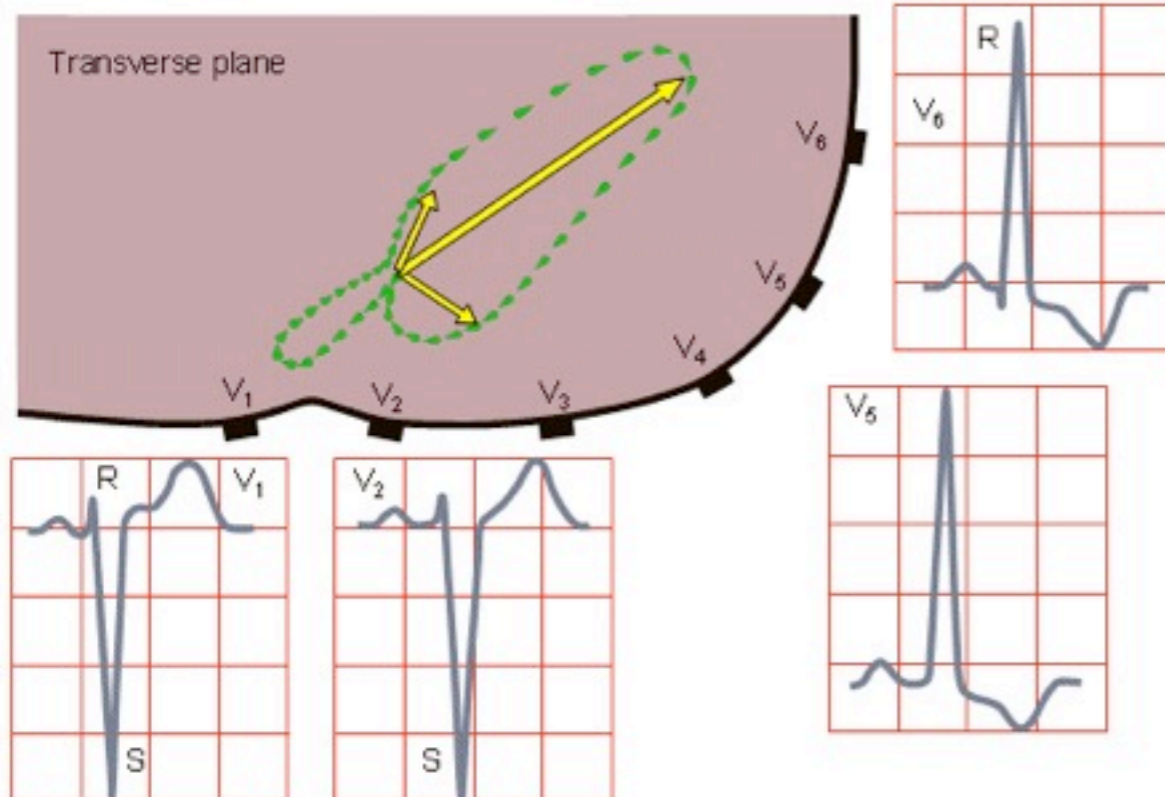
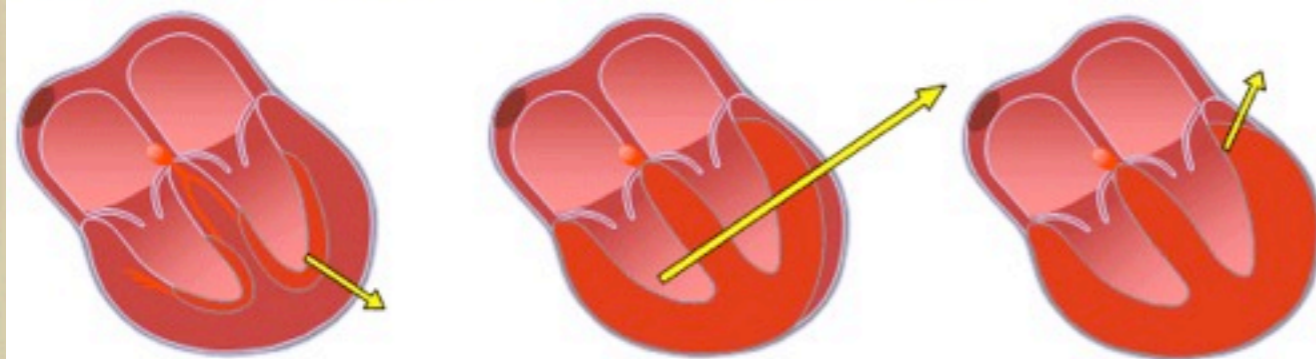
LEFT VENTRICULAR HYPERTROPHY



Ask Mish

LEFT VENTRICULAR HYPERTROPHY

Large S wave in leads V1 and V2, large R wave in V5 and V6



- In LVH, there is a **big LV depolarization vector** due to increased LV muscle mass, pointing **toward V5 and V6** that covers LV and **away from V1 and V2** that covers the RV.
- The result of this vector on EKG is a **high positive R wave in V5, V6** and **lateral leads: I and aVL** and a **deep negative S** in **V1 and V2**.
- Most of the time, cardiac axis is deviated to the left: **LAD**
- Other possible findings: **LAE** and **LBBB**
- **Secondary repolarization abnormalities** and **prolonged intrinsicoid deflection** is present in LVH.