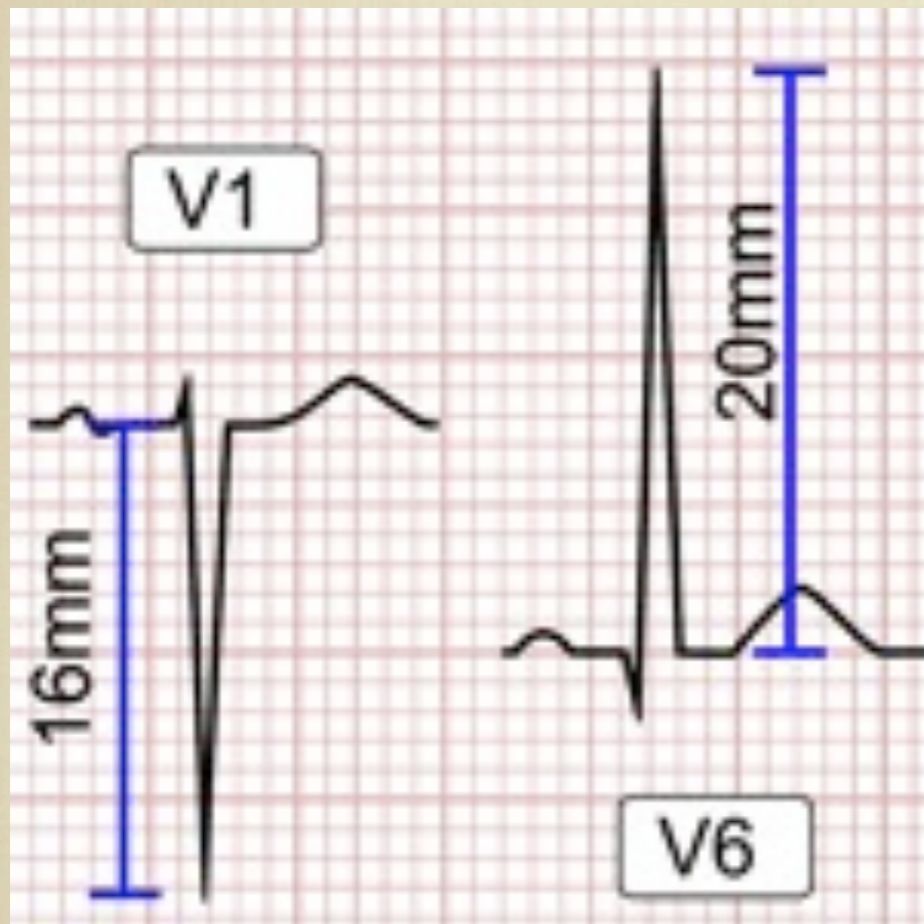


LEFT VENTRICULAR

HYPERTROPHY - EKG CRITERIA



Ask Mish



SOKOLOW-LYON CRITERION

- There are many EKG criteria for LVH.
- Many criteria are based on QRS amplitude (voltage).
- **1. SOKOLOW-LYON CRITERION:**
- S in $V1 + R$ in $V5$ or $V6 > 3.5$ mV (35 mm) or R wave in $aVL > \text{or} = 1.1$ mV (11 mm)
- **2. CORNELL CRITERION** is sex specific:
- R in $aVL + S$ in $V3 > 2.8$ mV (28mm) for males
 R in $aVL + S$ in $V3 > 2.0$ mV (20 mm) for females