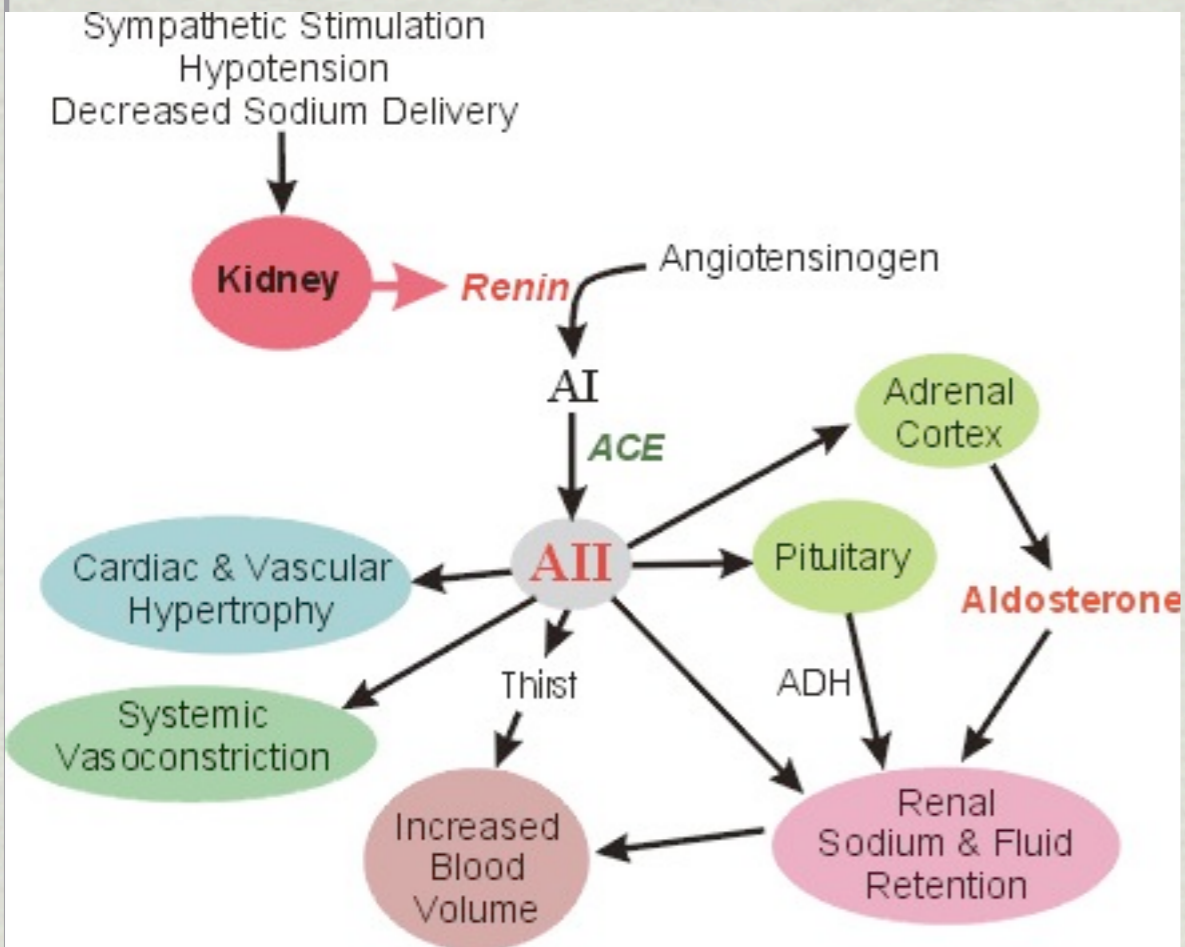


# Angiotensin II functions via AT1 receptors



<http://cvphysiology.com/Blood%20Pressure/BP015.htm>

<b>cardio-vascular</b>	arteriolar and venous constriction via AT1 receptors-> ↑ SVR and ↑ MAP Renal: efferent art constriction >>> afferent art.
	cardiac (ventricular) hypertrophy & remodeling vascular hypertrophy
↑ Na reabsorbtion	acts on adrenal cortex to release ALDOSTERONE -> ↑ Na reabsorption
	stimulate Na reabsorption on several renal tubular sites
↑ water retention	stimulate the release of ADH from posterior pituitary -> ↑ water retention
	stimulate the thirst center in hypothalamus
↑ sympathetic function	increase norepinephrine release from terminal endings and inhibits NE re-uptake

<http://cvphysiology.com/Blood%20Pressure/BP015.htm>