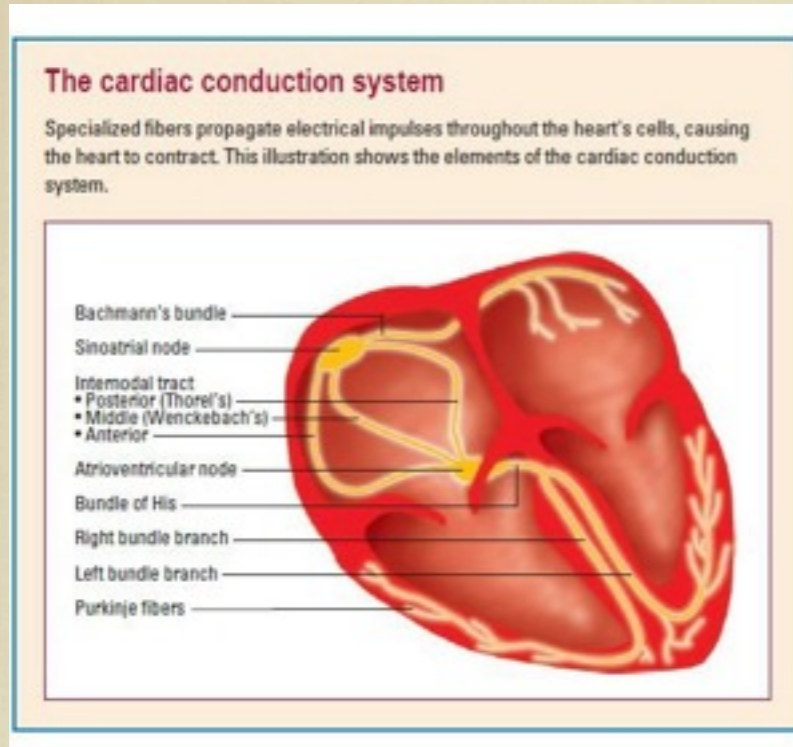


3 TYPES OF CARDIAC CELLS



Ask Mish



■ 3 TYPES of CARDIAC CELLS:

■ **pacemaker cells**

= electrical power source

SA node (1) or AV node (2)

■ **electrical conducting cells**

= wire of the heart

AV node(2) His bundle(3) with 2 branches(4,5) and Purkinje fibers(6)

■ **myocardial cells**

= contractile pump of the heart

Pacemaker->
(1)

