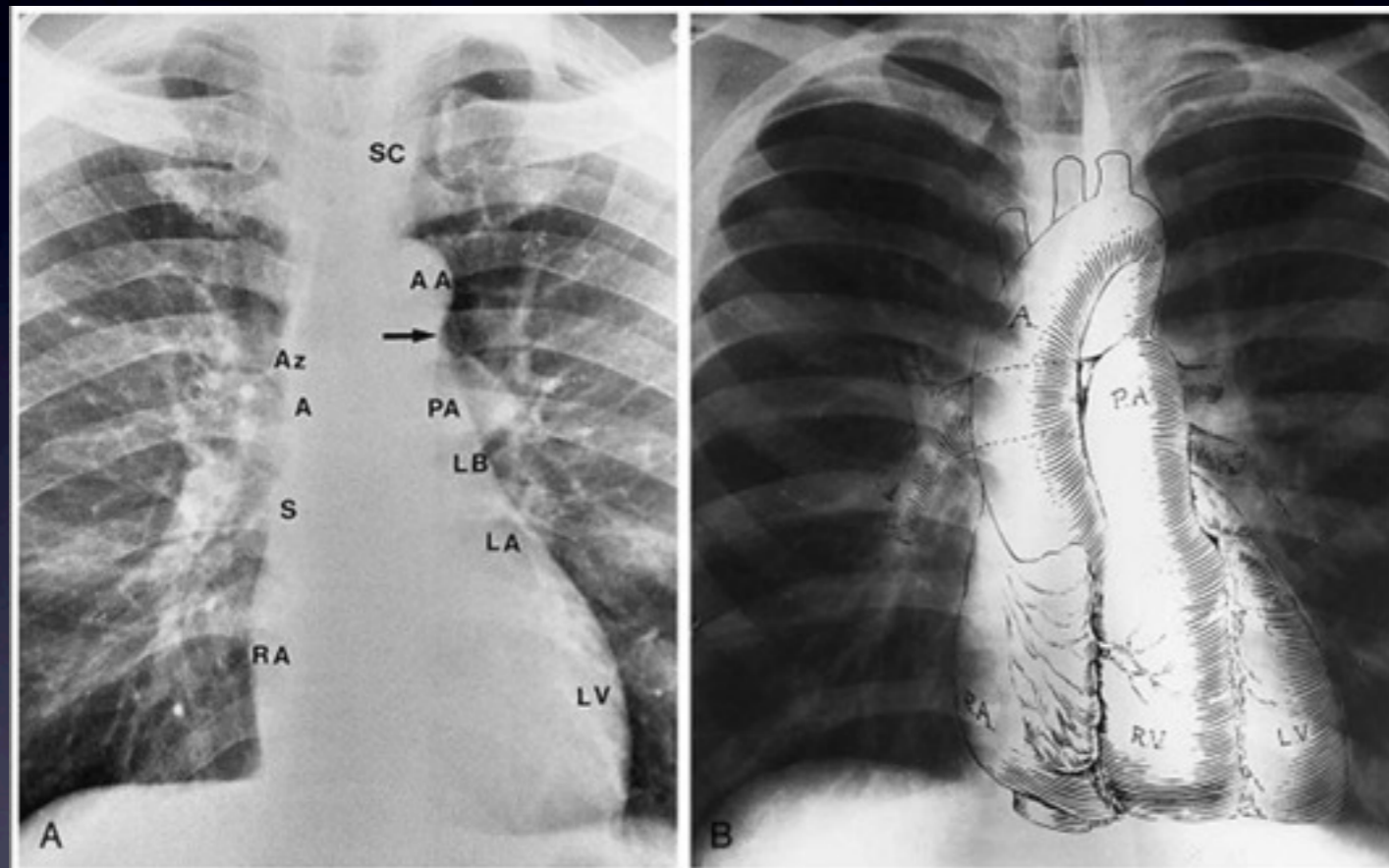


Xray image



Ask Mish



- Based on:
- Photons passing through matter: dark on X ray film
- Photons w/ photoelectric effect: (absorbed) white on Xray film, char. for dense matter: Ca and contrast
- Compton effect: photons scattered, grey and fuzzy on X ray film
- above the blue arrow, some colors on Xray and their main correspondent in tissues.
- Despite their popularity, X rays presented 3 major drawbacks: 3D structures were seen in a 2D film, the quality of the film was not very good, and some tissues cannot be differentiated by others, e.g. water and soft tissue.

