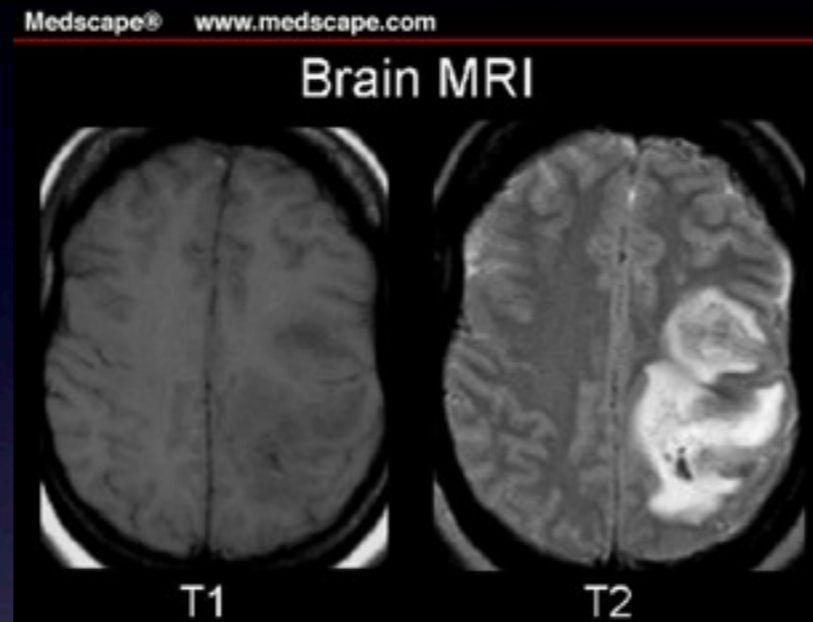
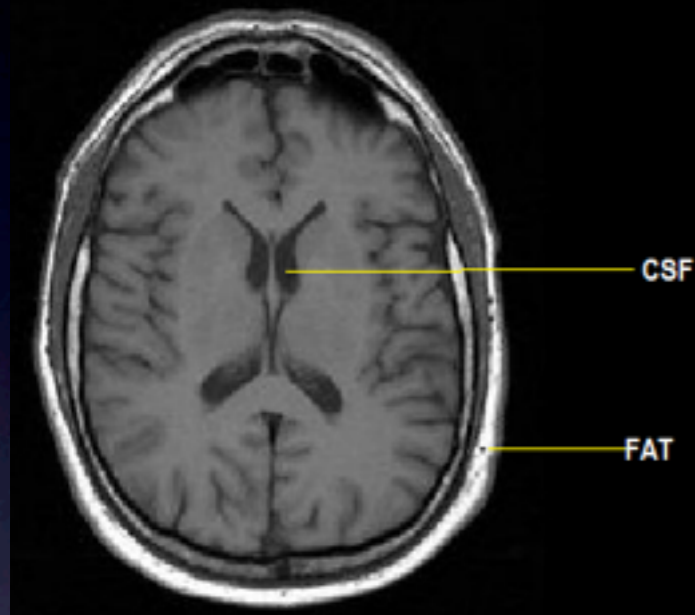


T1, T2 and Proton density weighted images



Ask Mish



- We create a T1 weighted image by changing TR meaning using a short TR. We use **T1 image** mostly in:

- cerebral cortex
- identifying fatty tissue
- focal liver lesions
- post contrast images

- We create a T2 weighted image by changing TE. We'll use a short TE. We use **T2 image** mostly in:

- edema
- white matter lesions
- prostate or uterus anatomy

