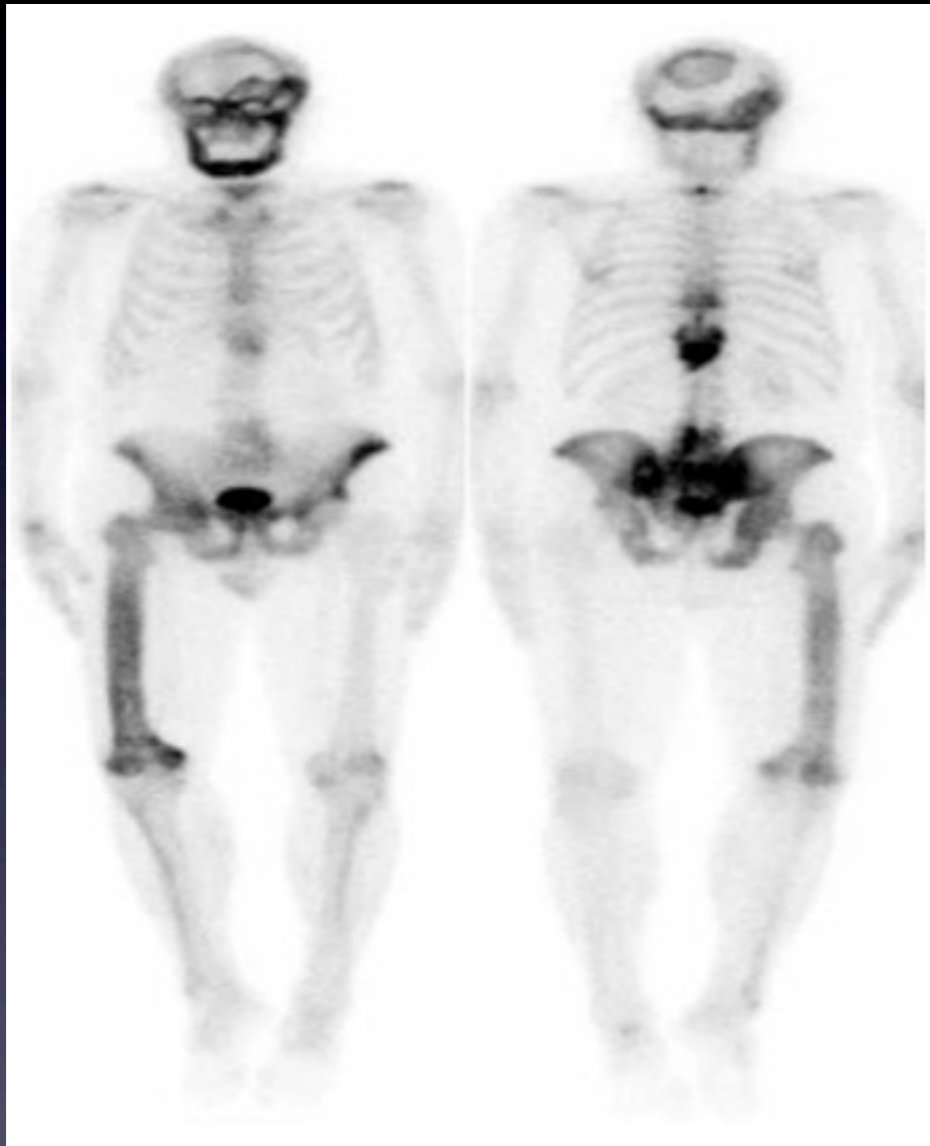


Bone scan example: Paget disease



Ask Mish



A man, 72 years of age, sought investigation of 3 months of chronic tiredness. He had no other specific symptoms. Blood count and biochemical profile were normal, apart from an isolated elevation in serum alkaline phosphatase level. Bone scan showed abnormal, intense radiotracer uptake in the calvarium, jaw, multiple vertebral bodies, pelvis and an expanded and bowed right femur. These findings are typical of polyostotic Paget disease.